

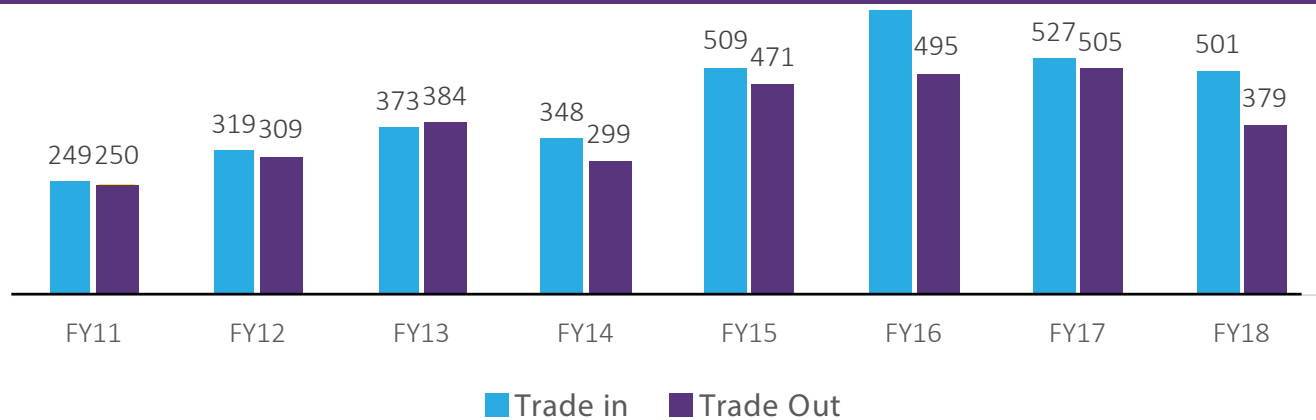
Logistics

Unleashing the potential of Jammu and Kashmir

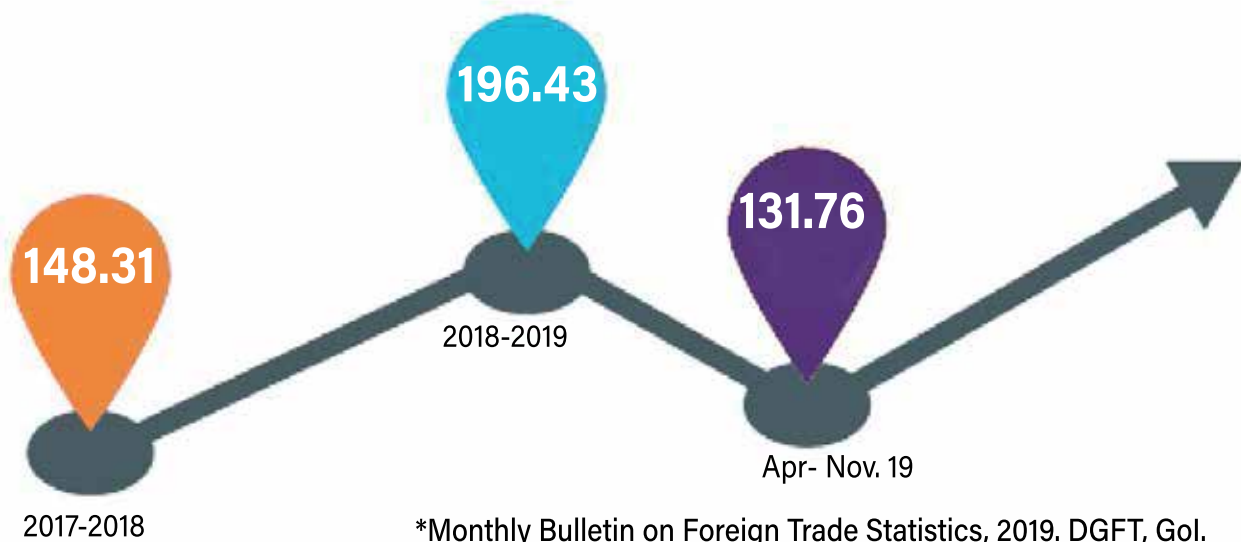
JAMMU AND KASHMIR

LOGISTIC INFRASTRUCTURE

JAMMU & KASHMIR TRADE IN/ TRADE OUT, REST OF INDIA (RS IN CR)

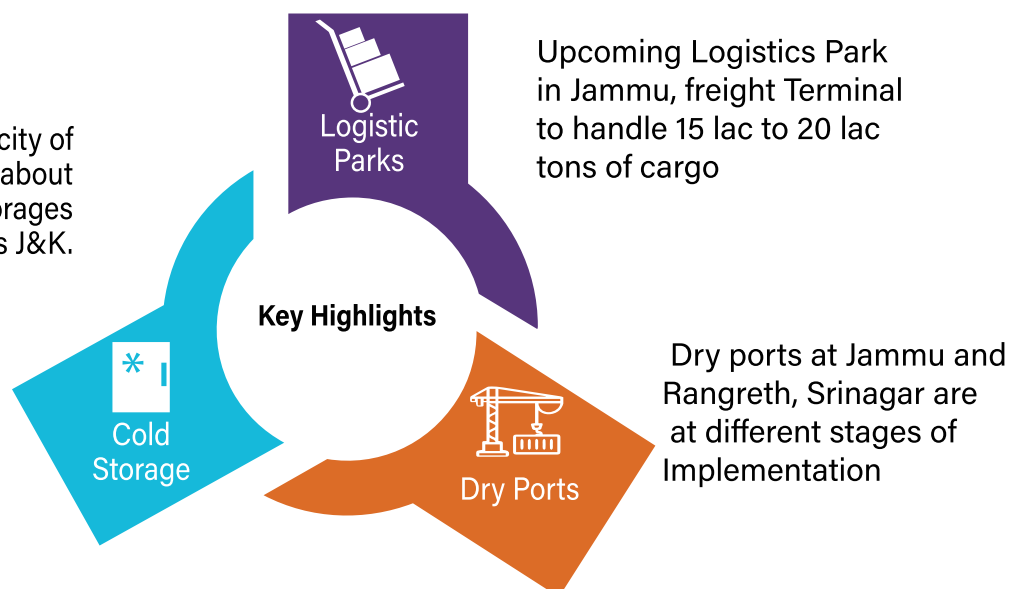


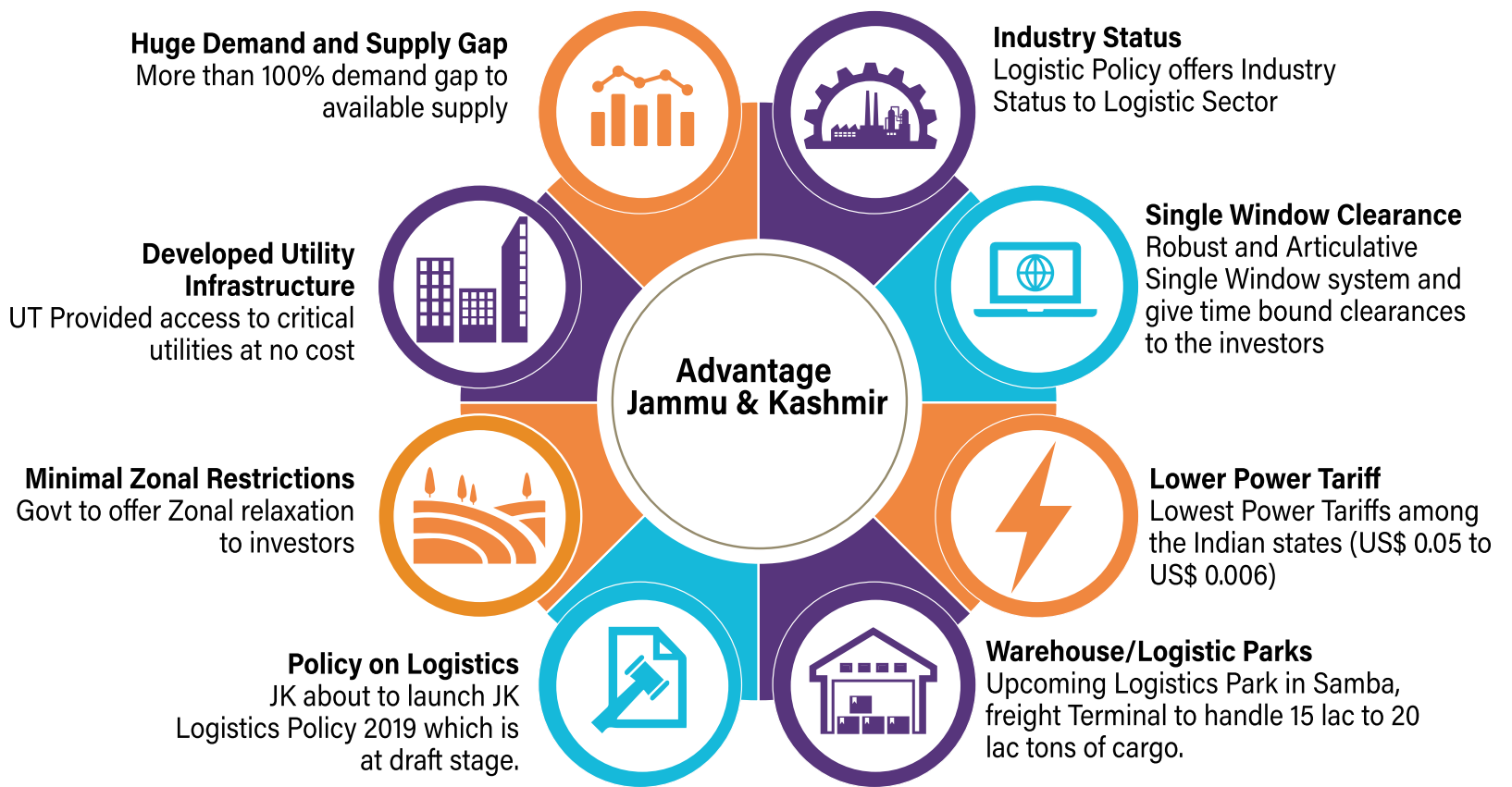
JAMMU AND KASHMIR EXPORTS (RS IN CR)



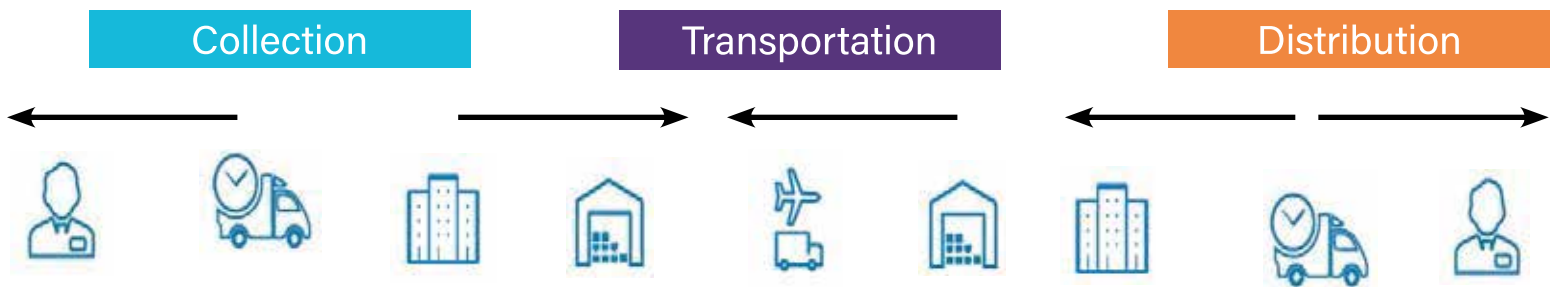
*Monthly Bulletin on Foreign Trade Statistics, 2019. DGFT, Gol.

The total cold storage capacity of J&K is 37,245 MT. There are about 20 privately held cold storages across J&K.

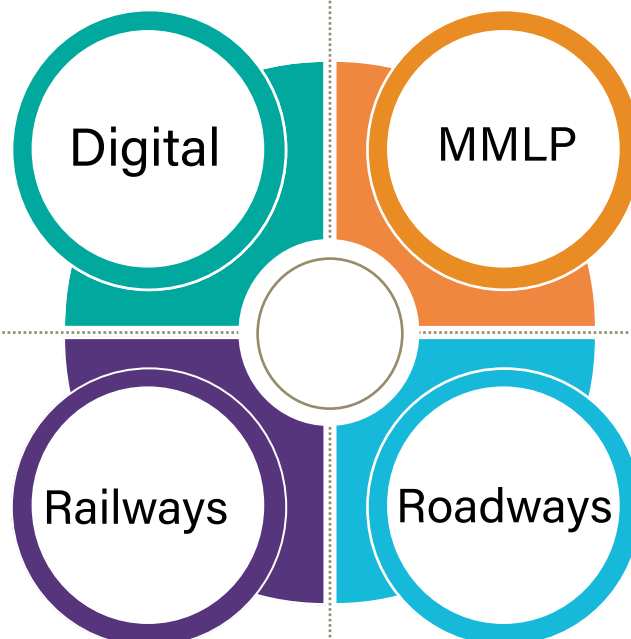




AREAS IDENTIFIED FOR INVESTMENTS/DEVELOPMENT



There is huge demand for IoT, Analytics, Blockchain and Robotic Process Automation in Logistics Industry. Companies with these capabilities are more cost-effective and competitive in the market. National Logistic Policy 2019 gives special focus to Digital interventions in Logistics.



Multi Modal Logistic Parks- The concept is relatively new in India and hence untapped. Opportunities exist in development, management and operation of Dry Ports, Warehouses, Cargo Terminals, Cold Chains, Banking, Office Spaces and Supply Chain, for Trade Commodities.

Development of railway stations, freight terminals are novel investment avenues.

Fleet exchanges to bring together transport customers and vendors based on the stock exchange model. Electronic Toll Collection (ETC) would amount to estimated fuel savings of INR 86,000 Crores per annum.

STRENGTHENING LOGISTICS INFRASTRUCTURE

To strengthen the Exports from the UT, Govt. of J&K has taken initiatives such as

- | Development of action plan across all Infrastructure verticals.
- | Ease of Exports and Policy enablers, specified timelines and nodal agency.
- | Development of responsibility matrix in Cooperation with centre on exports.
- | Ease of Doing Business (EODB) for fast clearances.

Administrative Secretary

Department of Industries & Commerce

 Civil Secretariat, Srinagar/ Jammu

 jkindcom@gmail.com


 0191-2544050, 0194-2506336

 www.jkindustriescommerce.nic.in

Managing Director, JKTPO

 Jawaharlal Nehru Udyog Bhawan, Jammu
Sanat-Ghar, Bemina, Srinagar

 contactjktpo@gmail.com

 0191- 2479924

 www.invest.jk.gov.in